

A Career in Public Health

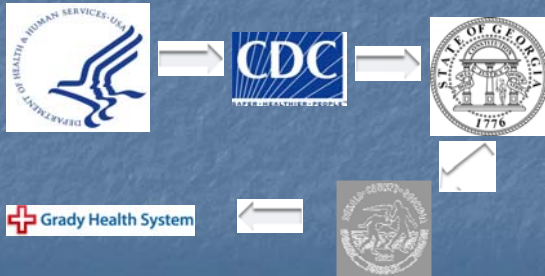


Claressa E. Lucas, Ph.D.
ELITE Program Coordinator
Staff Microbiologist
CCID/NCIRD/DBD/RDB

What is Public Health?

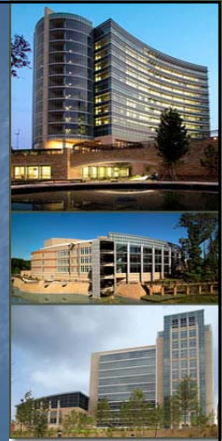
"The science and art of preventing disease, prolonging life and promoting health through the organized efforts and informed choices of society, organizations, public and private, communities and individuals."

Who is Public Health?



Where I work

- Main campus (Roybal) 1600 Clifton Rd, Atlanta, GA
- 8 other campuses in the metro Atlanta area
- 10 other campuses in the United States and territories
- At least one CDC officer in each state and territory
- And...



What is CDC?

The world's premier SME's
...always on call!



What CDC is NOT!

- A regulatory agency
- An educational institution
- A basic microbiology lab
- An industrial innovator

Except when we are

How to get in – My Story



Undergrad: 1988 - 1992



- B.S in Microbiology
- *S. aureus* mastitis in dairy cows
- Mentor: Gary S. Sloan
- Harry S. Truman Foundation Fellowship

Graduate School: 1992 - 1996



- Ph.D. in Microbiology and Molecular Genetics
- Mentor: William M. Shafer
- Efflux pump mediated multidrug resistance in *N. gonorrhoeae*
- Robert D. Watkins Graduate Research Fellowship

Postdoctoral Training: 1996 - 2000



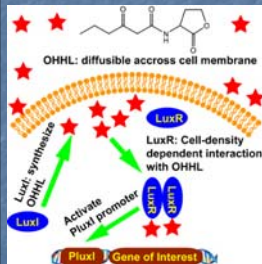
- Mentor: Thomas Shinnick
- Mechanisms of hypervirulence in a strain of *M. tuberculosis* from an outbreak in Ohio
- ASM/NCID Postdoctoral Fellowship
- ORISE Fellowship

The Take Home on Preparation

- I am a freak of nature!
- Focus on pathogens
- Diverse skill sets
- Interest in public health
- Wide audience communication

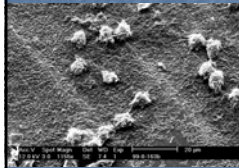


My Career Path 2000-2003: Quorum Sensing



Stephanie Ziegler, Ph.D.

My Career Path 2003-2006: Biofilms

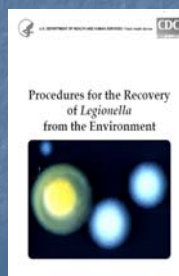
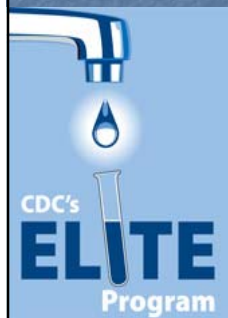


Providing Innovative Products for Biofilm Investigations

BioSurface Technologies Corp.



My Career Path 2006 – Present: The ELITE Program



A Day in My Life: July 16, 2009

- 8:30 AM: Begin ELISA
- 9:30 AM: Conference call on PA outbreak
- 11:00 AM: Return to ELISA, ELITE sample QC
- 12:00 PM Lunch with potential Chinese collaborator
- 1:15 PM: Finish ELISA and report results to collaborator at Columbia University
- 1:30 PM: Consult with NASA on potable water for extended missions, while writing legionellosis impact summary for congressional aide
- 2:00 PM: Attend mandatory division meeting
- 3:00 PM: Train EIS officers in sampling techniques before deployment
- 4:00 PM: Submit budget report, abstract for international *Legionella* meeting, finalize travel arrangements, prepare paperwork for safety drill, review ILA accreditation requirements
- 5:00 PM: ELITE Program customer relations
- 5:30 PM: Go home!

Things I Had to Learn

- Limitations
- How to think **really** big
- Schedule flexibility
- How to pack lightly
- How to navigate “the system”
- How to communicate with anyone

Creating Your Niche

- Get your foot in the door
- Network outside your specialty
- Cultivate diverse interests
- Don't panic!

